



Direct Access to Optical Very High-Resolution Satellite Imagery





GROUND STATION



Our Direct Access Facility (DAF) is located near Munich. It allows collection planning and data production from all the DigitalGlobe satellites



GROUND STATION BENEFITS



Last minute
order entry



Maximizing
collection yield
(# of targets)



Minimizing cloud
cover and maximizing
area of collection



Faster production
and near real-time
delivery

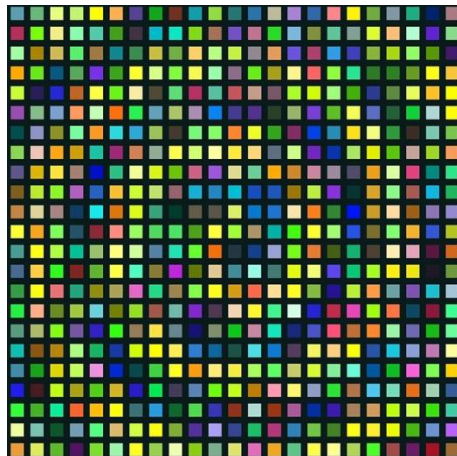
DIGITALGLOBE'S VHR SATELLITE CONSTELLATION



LEADING VHR SATELLITE CONSTELLATION



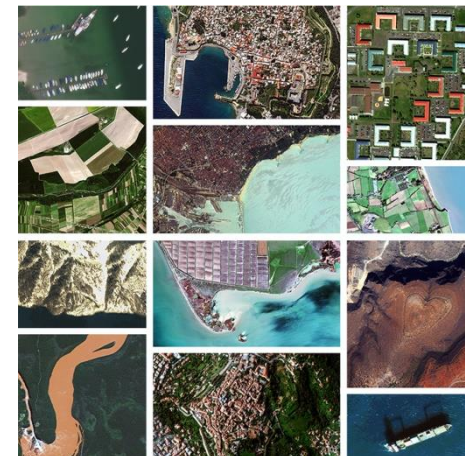
5: LARGEST FLEET OF VHR SATELLITES



30 CM: HIGHEST SPATIAL RESOLUTION

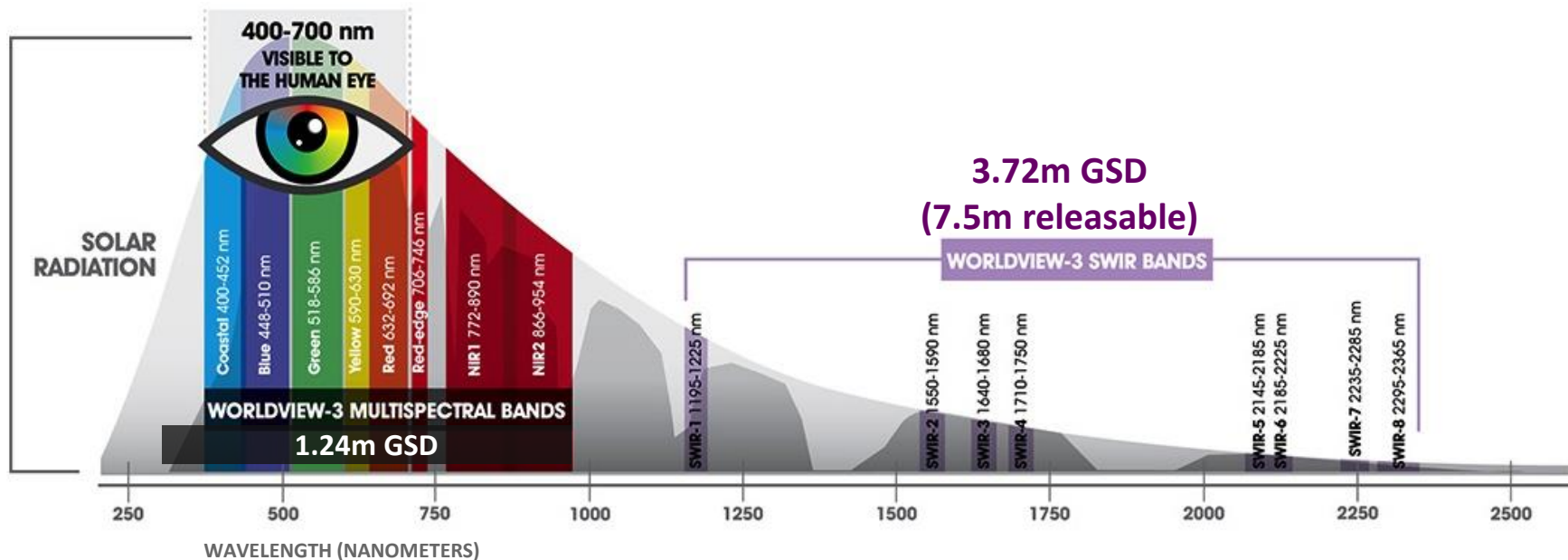


8 BANDS: HIGHEST SPECTRAL RESOLUTION ON VHR SATELLITES



5 B.km² : LARGEST ARCHIVE COLLECTION AVAILABLE

SPECTRAL CAPACITIES



Pan: 0.31m GSD





CATALOGUE – iohs.euspaceimaging.com/smartsearch

Navigation icons: Home, Refresh, Save, Download, Full Screen

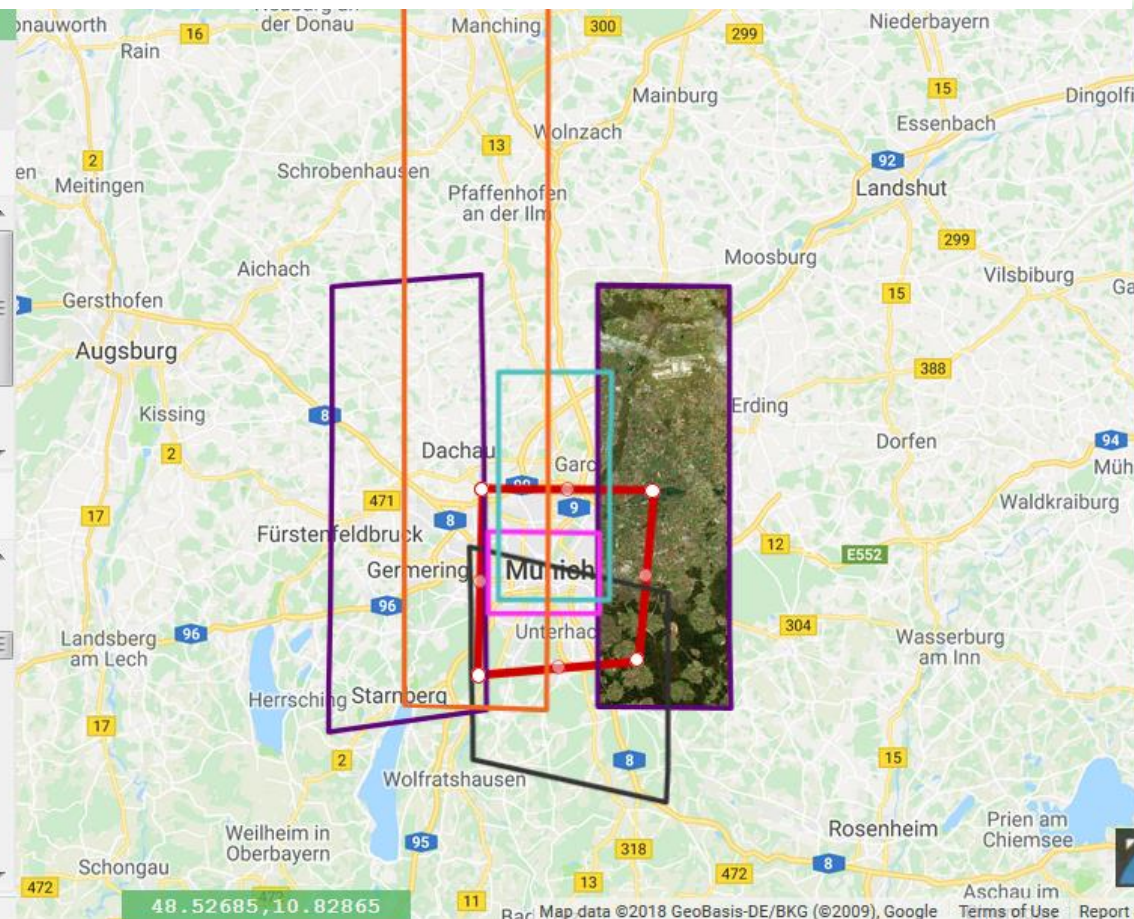
[New Collection](#)

Selected Images clear x 6

REMOVE	PAW	SENSOR	CLOUD	ONA	DATE
x	^v	GE01	1%	7	2017-10-18
x	^v	WV01	0%	33	2017-10-14
x	^v	GE01	21%	23	2017-09-15
x	^v	WV04	0%	6	2017-05-29
x	^v	WV03	0%	7	2017-03-12

Search Results Showing 64 of 453

🏠	🐾	👁️	📄	GE01	5%	10	2017-06-09
🏠	🐾	👁️	📄	WV04	55%	34	2017-05-12
🏠	🐾	👁️	📄	GE01	0%	21	2017-03-28
🏠	🐾	👁️	📄	GE01	0%	33	2017-03-27
🏠	🐾	👁️	📄	WV02	37%	23	2017-03-26
🏠	🐾	👁️	📄	WV02	36%	30	2017-03-26
🏠	🐾	👁️	📄	WV02	18%	13	2017-01-17



Vertical sidebar with navigation icons: Home, Location, Full Screen, Refresh, Full Screen, Home, Location, Upload, Zoom In, Zoom Out, Report a map error.



Search by location name or coordinates...



Lat: 44° 25' 3.79" N : Lon: 26° 10' 2.53" E

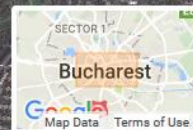
Grid Off



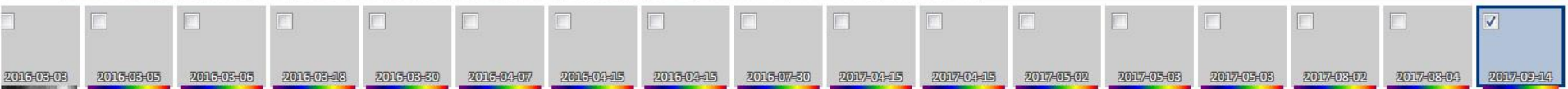
Zoom Level: 14

500 m

2000 ft

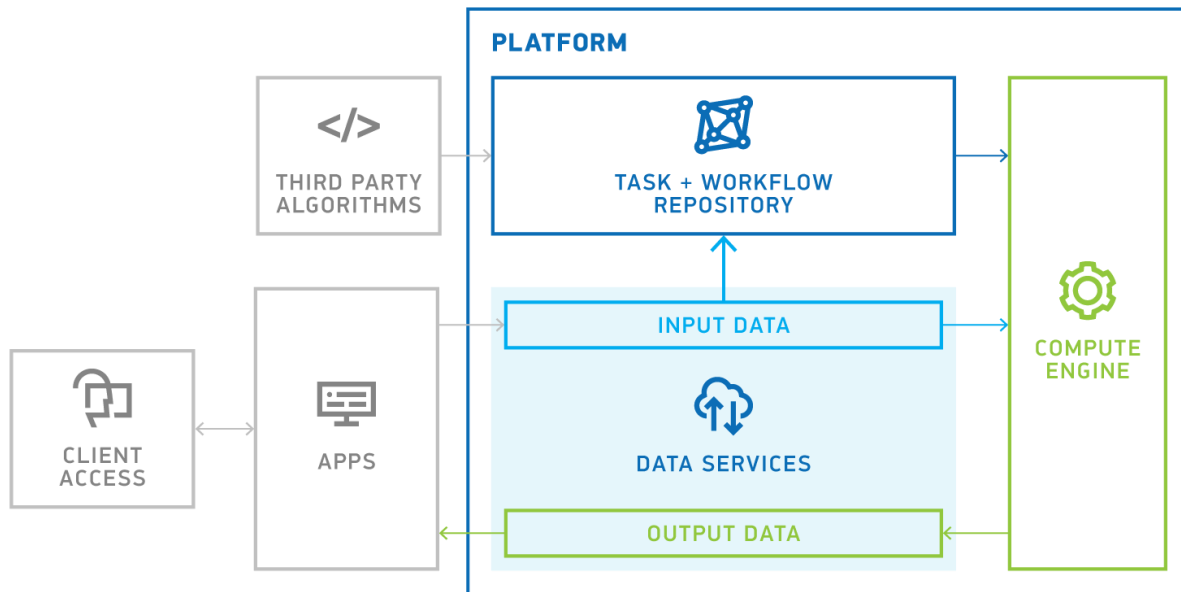


With Selected...



DATA ACCESS PLATFORM

DigitalGlobe's **GBDX** platform provides customers with a fast and easy way to search, order, and process images and their data



DATA ACCESS PLATFORM

Web Application (Graphical User Interface): Use the GBDX web application to search for imagery, define or upload an area of interest, save your work to a project, and access your processed data.

REST APIs and Services: You can use GBDX's REST APIs and services to search the catalog, order imagery data, run tasks and workflows (e.g. ENVI, GDAL, DG proprietary tools), access your AWS S3 bucket (cloud and local storage), and much more.

- Missions available
- GeoEye-1
 - LANDSAT-8
 - QUICKBIRD
 - WorldView-1
 - WorldView-3
 - IKONOS
 - RADARSAT-2
 - SENTINEL-2
 - WorldView-2
 - WorldView-4 coming soon



EUSI Contribution to Maritime Safety & Security: EMSA OpSSERVE

Optical satellite services for EMSA, phase II

Customer: European Maritime Safety Agency (EMSA)

Need: Monitoring of ports, coastlines and targeted activities at sea, pollution, drug trafficking, human smuggling, border control

Challenges:

- provision of VHR optical satellite data (resolution ≤ 50 cm)
- time critical delivery (45 min)
- short notice tasking
- reliability
- near real-time monitoring and mapping for vessel and related activity detection, in cooperation with DLR





Costa Concordia, Italy | 22 January 2012 | WorldView-2
© 2018 European Space Imaging

THANK YOU FOR YOUR ATTENTION

Henning Götz

hgoetz@euspaceimaging.com
